

BOUDICA

USB Gaming Headset

The 7.1 Virtual Surround Sound immerses you in the in-game environment so that you can hear and detect your enemies and incoming threats all around you. When you connect the USB to your PC and download the Velocilinx Surround Sound software, you can fully customize the sound for each game, and save your settings in individual named profiles.

The 50mm advanced neodymium drivers deliver high-quality stereo sound to keep you immersed in your game or music from start to finish with modern lightweight comfort design that is crafted for long gaming sessions.

Onboard unique tension controls adjust the tightness of the headset to your personal preference and soft memory foam earpads block outside sounds and keep your ears cool for distraction-free play. Seven LED lighted colors add a stylish ambiance to your game play.

Part Number: VXGM-HS71S-21U-WH

Velocilinx™

PRODUCT FUNCTIONS

- Total immersion with 7.1 surround sound
- Outstanding audio with powerful bass sounds and clear treble
- High quality built and looks
- Adjustable microphone boom
- In-line remote control (volume, mic, backlight on/off)
- Soft-cushioned synthetic leather ear cups

SPECIFICATIONS

- Sound: 7.1 surround (virtual)
- Frequency response: 20 Hz - 20 kHz
- Speaker size: 50 mm
- Speaker impedance: 21 Ohm
- Microphone type: unidirectional
- Microphone size: 6 mm x 5 mm
- Microphone sensitivity: -42 dB ± 3 dB
- Backlight: rainbow backlight
- Connectors: USB 2.0
- Cable length: 7.2 ft (2.2 m)
- OS support: Windows 7 or newer

Operation Instructions

- Connect the USB connector of headphone to an open USB port on the computer or gaming device.
- Verify the computer or device has recognized the headset.
- Operate according to User Manual.
- Please do not use the headset in extreme heat or cold.

Installation

- Download the driver from velocilinx.com/support.html
- Open the installation folder, double click Setup.exe to launch the driver installer program.
- Select your language.
- Click "Next"
- Click "Finish" to complete the installation process.
- Plug in the USB headset.

Software Operation

- The application icon will appear on the desktop and in the start menu after the installation.
- Double click the icon to enter open the settings interface.

Troubleshooting

These are sets to helps fix problems in which the device cannot be recognized, with no or limited functionality.

- Check if the USB plug on the headset or the port on the computer has been damaged;
- Check the Audio settings on the computer for the selected device, make sure it is the headset;
- Disconnect the headset, wait 15 seconds then reinsert the plug into the same port;
- Disconnect the headset, wait 15 seconds then reinsert the plug into a different port;
- Restart computer.

If the trouble shooting suggestions above do not solve the problems, please contact the local dealer.

Please visit the Velocilinx website to get more information about our latest products and other information at velocilinx.com.

Prop 65

This product can expose you to chemicals including lead, Di(2-ethylhexyl) phthalate (DEHP), and other phthalates which are known to the State of California to cause cancer, birth defects or other reproductive harm. For more information, go to www.p65Warnings.ca.gov

FCC Part 15

This device complies with part 15 of the FCC Rules. Operation is subject to the following two conditions: (1) This device may not cause harmful interference, and (2) this device must accept any interference received, including interference that may cause undesired operation. use undesired operation.

SUPPORT**Warranty**

velocilinx.com/support.html

Support Page

velocilinx.com/support.html

Support Phone Number

+1 866 822 5589

BOUDICA™

Mechanical Gaming Keyboard

The Boudica USB silver and white gaming keyboard is designed for hardcore, pro-level performance. The lightning fast Outemu Blue mechanical spring keys provides a solid click and bounce back.

The onboard anti-ghosting technology gives the serious gamer confidence knowing when you click a key, you will feel it, and it will execute - no matter how many keys you hit!

Featuring 18 special PRISM lighting effect modes. Within modes, select between 9 different custom colors. The special Veloci-key, is a short cut to quickly cycle through 8 preset color themes. Custom Color Key Mapping allows for individual

Part Number: VXGM-KB104P-OBL-WH

Velocilinx™

key color mapping to create your own design or to illuminate special keys for gaming. The keyboard has the ability to lock out the WIN key during game play.

This beautiful and sophisticated keyboard leverages an ultra-modern design, with soft satin brushed finishes, RGB PRISM backlighting technology and using white double injection keys to allow the 16.8 million colors to shine through.

KEYBOARD SPECIFICATIONS

Key life: 50 million strokes

Electrical: +5V \pm 5% 500 mA

Made in China

FEATURES

- Full Speed USB 2.0: Supports 1,000 Hz keystroke reporting rate.
- 18 Special PRISM LED lighting effect modes and a Veloci-key to quickly cycle through 8 preset color modes.

- Embedded anti-ghosting technology executes every keystroke to maximize your gameplay.
- Outemu Blue mechanical spring keys provide a crisp, tactile feel and sound. An eSports standard.
- Multiple hot keys to execute your favorite, most deadly commands, just faster.
- Cutting-edge, fast-uploading Flash memory EEPROM.
- WIN key lockout option for gaming vs. computing.

Outemu Blue

- New, brighter, and waterproof keys.
- Rated for 50 million key presses per switch.
- 1,000 Hertz polling rate.

RGB Lighting

- 16.8 million color combinations.

- Velocilinx Keyboard customization software
- Individual Custom Color Key Mapping

Veloci-Key™

Cycles quickly through 8 preset color options: Red, Orange, Yellow, Green, Blue, Indigo, Violet and Rainbow

WIN Key Lockout

To Lock out/Unlock Win Key

- FN & WIN: locks out the WIN and APP keys and displays the game lock LED.
- Press once to Lock out the Win key and press again to unlock.

Keyboard Function Modes

4 LED INDICATOR LIGHTS

- There are 4 LED lights on the top right corner of the keyboard that display what operating mode the keyboard it is in.
- They are: Caps Lock, Num Lock, Scroll Lock and Game Key Mode

DEFAULT SETTINGS

Startup Mode

- The keyboard will run a LED test when powering on the computer or plugging in the keyboard. Each key on the keyboard will illuminate white in a serpentine pattern.
- Once the test is complete, the keyboard displays the default Rainbow Lighting effect mode.

Reset To Default Setting - Erase all Saved Settings

- FN & ESC & F1 & F3 & F5: Erases all saved settings and returns to the default Rainbow Setting.
- Veloci-Key: Press Veloci-Key to cycle through color schemes to reach Default Rainbow Setting (custom settings will remain saved).

KEYBOARD LIGHTING

To turn off all lights/effects

- Keyboard Colors

FN & ↓: keep pressing until the keyboard shuts off
FN & ↑: keep pressing until brightness increases to maximum

- Poly Glow™ Orbiting Edge Colors

FN & SCLK: keep pressing to cycle through all color modes, until orbiting edge colors shut off/on.

Increase or decrease brightness

FN & ↑/↓: to increases/decreases brightness, three levels of brightness

Increase or decrease speed of Lighting Effects

FN & +/-: Increases/Decreases the speed of a scrolling action

Preset Color Modes

- Veloci-Key: Press Veloci-Key to quickly cycle through 8 preset color modes.

- **Color Cycling Within Lighting Effect Mode:** To cycle through all 9 colors when a mode has been applied
FN & →: Cycles colors to Red, Orange, Yellow, Green, Blue, Indigo, Violet, White, Rainbow
(This universally changes colors regardless of the mode except in Concentric Rainbow, Poly Grow Prism, Fading Color Morph modes)

Poly Glow Orbiting Edge Lights

To control the Poly Glow Orbiting Edge Lights

FN & SCLK: Fast rainbow scroll (Default Setting upon Start Up Mode)

FN & SCLK 2: Fading color morph starting with Red

FN & SCLK 3: Red

FN & SCLK 4: Orange

FN & SCLK 5: Yellow

FN & SCLK 6: Green

FN & SCLK 7: Blue

FN & SCLK 8: Indigo

FN & SCLK 9: Violet

FN & SCLK 10: Shuts off the Poly Glow Orbiting Edge Lights.

PRISM LIGHTING MODES

Multiple Color Modes

- For each of the following function key combinations, pressing the desired combination of keystrokes 1 time will enter the mode.
- Pressing the combination, a second or third time will rotate between each of the modes in that type of lighting.

Mode 1

FN & DEL: Slow Wave left to right

FN & DEL 2: Scroll (Rainbow Scroll is achieved by hitting FN & RT seven times).

FN & DEL 3: Fast Wave left to right

FN & →: each press cycles through and applies a new color

Mode 2

FN & INS: Fading Color Morph starting with Violet (color cannot adjust)

FN & INS 2: Fast Pulse color of last selected color selected by Veloci-Key or mode

FN & INS 3: Steady Rainbow or Solid color selected by Veloci-Key or mode

FN & →: each press cycles through and applies a new color

Mode 3

FN & END: Poly Glow Prism

FN & END 2: Dancing Lights (color previously selected by Veloci-Key)

FN & END 3: Color Fountain

FN & →: each press cycles through and applies a new color

Mode 4

FN & HOME: Splash Effect off of whatever key is pressed

FN & HOME 2: Shadow Splash off of whatever key is pressed

FN & HOME 3: Row Splash off of whatever key is pressed

FN & →: each press cycles through and applies a new color

Mode 5

FN & PGUP: Sine Wave

FN & PGUP 2: Fleeing Tornado

FN & PGUP 3: Slow Rain Fall

FN & →: each press cycles through and applies a new color

Mode 6 (Softer Colors – Special Bonus Colors)

FN & PGDN: Ping Pong

FN & PGDN 2: Softer Solid Colors (FN & →: to cycle through these special colors - Summer Rose, Turquoise, Ice Blue, Country Yellow)

FN & PGDN 3: Concentric Rainbow (colors cannot adjust)

FN & →: each press cycles through and applies a new color

Individual Key Mapping**To Activate Key Mapping Mode**

FN & ~: Press the ~ tilde key 2 times to activate the key mapping mode.

- Four LED lights in the upper right corner will start flashing.

(Note – You must press the Function Tilde key 2

times in order to access Key Mapping Mode)

To Customize Key Illumination

FN & -> Press the FN & right arrow keys to select desired key/keys to illuminate.

- Press all keys that you want to illuminate and all desired keys are mapped.

- Key will illuminate in default red color mode.

- To save settings, press FN & ~, which exits Key map mode.

To Change Color of Illuminated Selected Key/Keys

FN & ->: Press FN & right arrow, then press the desired key/keys to change to the first color in the sequence.

- To change to the next color in the sequence press FN & right arrow again, and again press desired key/keys.

- Repeat until desired color is achieved.

- Color sequence order is: red, orange, yellow, green, blue, indigo, violet, white, off

- Tilde ~ key will display the current selected color in the sequence while programming keys

To Save Settings & Exit Key Mapping Mode

FN & ~: saves changes and exits key mapping mode. 4 LED stop flashing and only 1 LED remains when exiting mode.

Veloci-Key: Quickly leaves the Individual Key Mapping Mode. But does not save the custom illumination setting.

(Note - It is important to press FN & ~ to save custom settings, prior to exit)

Return to Saved Customized Color Settings

FN & ~: Press FN & ~ to return to your saved Individual Key Mapping Program

MEDIA SHORTCUT KEYS

FN & F1: Selects Media

FN & F2: Decreases Volume

FN & F3: Increases Volume

FN & F4: Mutes Volume

FN & F5: will Stop CD

FN & F6: plays Previous Track

FN & F7: toggles between Play & Pause

FN & F8: plays Next Track
FN & F9: opens default Email client
FN & F10: opens default Web browser or Home page
FN & F11: opens Calculator
FN & F12: opens Search

SUPPORT

Warranty

velocilinx.com/support.html

Support Page

velocilinx.com/support.html

Support Phone Number

+1 (866)822-5589

Prop 65

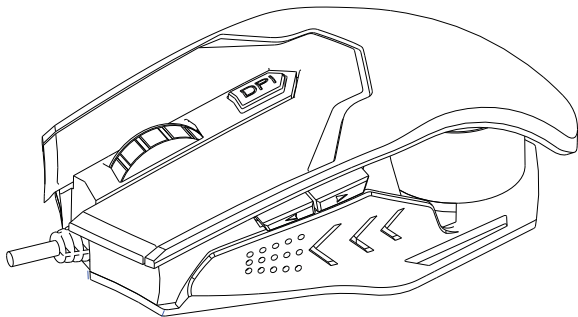
This product can expose you to chemicals including lead, Di(2-ethylhexyl) phthalate (DEHP), and other phthalates which are known to the State of California to cause cancer, birth defects or other reproductive harm. For more information, go to www.p65Warnings.ca.gov

FCC Part 15

This device complies with part 15 of the FCC Rules. Operation is subject to the following two conditions: (1) This device may not cause harmful interference, and (2) this device must accept any interference received, including interference that may cause undesired operation.

BOUDICA

USB Gaming Mouse



This mouse is a 6 button programmable optical mouse with six DPI settings (up to 10,000) to enhance your response times and targeting accuracy. Colored lights change with each DPI setting. Sleek modern design with a weighted metallic bottom case and slip-and-sweat resistant rubber textured surface for hours of precision gaming.

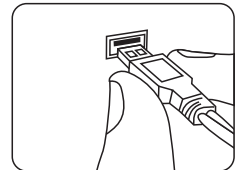
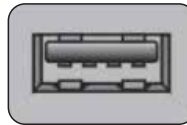
Part Number: VXGM-MS6B-10K-SL

Velocilinx™

FEATURES

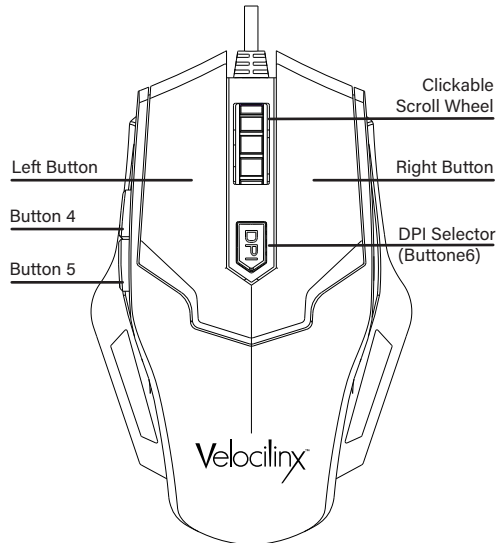
- Six color RGB lighting
- High precision optical engine
- Chipset: A3325
- Default DPI: 1,000-2,000-3,000-5,000-7,000-10,000
- Frame rate: up to 3,600 fps
- Buttons: total: 6; programmable: 5
- USB interface
- Sleek, modern design
- Metallic bottom case
- 5 ft (1.5 m) braided fiber cable
- Dimensions: L125xW81xH39mm

INSTALLATION



- Identify USB port
- Carefully plug the mouse cord into it

LAYOUT



SUPPORT

Warranty

velocilinx.com/support.html

Support Page

velocilinx.com/support.html

Support Phone Number

+1 866 822 5589

Prop 65

This product can expose you to chemicals including lead, Di(2-ethylhexyl) phthalate (DEHP), and other phthalates which are known to the State of California to cause cancer, birth defects or other reproductive harm. For more information, go to www.p65Warnings.ca.gov

FCC Part 15

This device complies with part 15 of the FCC Rules. Operation is subject to the following two conditions: (1) This device may not cause harmful interference, and (2) this device must accept any interference received, including interference that may cause undesired operation. use undesired operation.

Electric specifications:

5 V = 500 mA

Made in China